

THE FLOORING COLLECTION

Swiss engineered from the ground up.





The Swisstrax brand

Randy Nelson, Founder & CEO, directed the development of this revolutionary modular flooring line in Switzerland for over 20 years before bringing the product to the USA in 2006. Today, the Swiss engineered flooring is proudly manufactured exclusively in the US and Canada and distributed direct from its headquarters in Southern California.

Swisstrax flooring continues to offer the premier modular flooring solution for commercial, residential and industrial applications world wide!



Randy Nelson
President CEO

Our mission *Providing the finest modular flooring solutions through passion, excellence, innovation and service.*



Swisstrax Corporation Headquarters
82-579 Fleming Way #A, Indio, CA 92201

Table of contents

4	About Swisstrax	18	Turftrax®
6	Commercial Flooring	19	Carpetrax®
8	Event Flooring	20	Splashtrax®
10	Residential Flooring	21	Lightrax®
12	Ribtrax®	22	Basetrax®
13	Vinyltrax®	23	Cabletrax®
14	Diamondtrax®	24	Sportrax®
15	Rubbertrax®	25	Floortrax®
16	Logotrax®	26	Accessories
17	Graphictrax®		





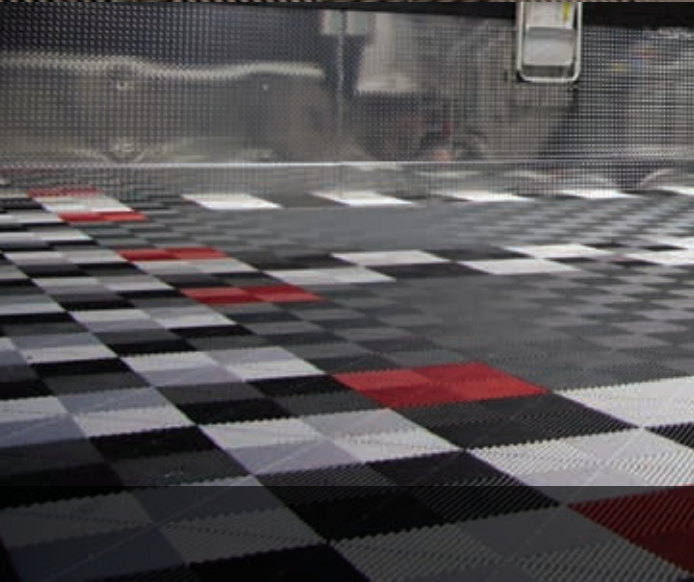
The world's finest modular flooring.

Swisstrax isn't simply flooring. It lays the foundation for the finest garages, showrooms and eventscapes in the world. Engineered to assemble in a *Swiss Click™*, modular Swisstrax tiles can be configured to feature your logo and custom color combinations. Best of all, it's durable, easy to maintain and comes with a full, 15-year warranty. Transform your space today. You'll be floored.



“ Using Swisstrax throughout the sponsor pavilion as well as the Barrett Jackson staging lanes has really elevated the presence of these areas. We used to use carpet but the Swisstrax tiles have proven to be the best flooring option, hands down! They look great and hold up perfectly show after show! ”

Craig Jackson
CEO Barrett Jackson Auction Company





INDUSTRY'S CHOICE

Trusted by Ford, Dodge, John Deere (just to name a few) and backed by rigorous testing certifications, we have earned the finest reputation around the globe.



SUPERIOR DESIGN

Swiss engineered and made in North America. Our interlocking flooring tiles are 3/4" thick, have 6 connectors per side and are handcrafted with a 4 point injection mold.



ULTIMATE PROTECTION

Our event, commercial and residential flooring tiles come with a 15 year warranty. Our warranty isn't prorated, has no restocking fees and no hassles.

Official licensed product



Preferred supplier to



+ many more





Commercial *Flooring*

the perfect way to enhance the look of your business and it's

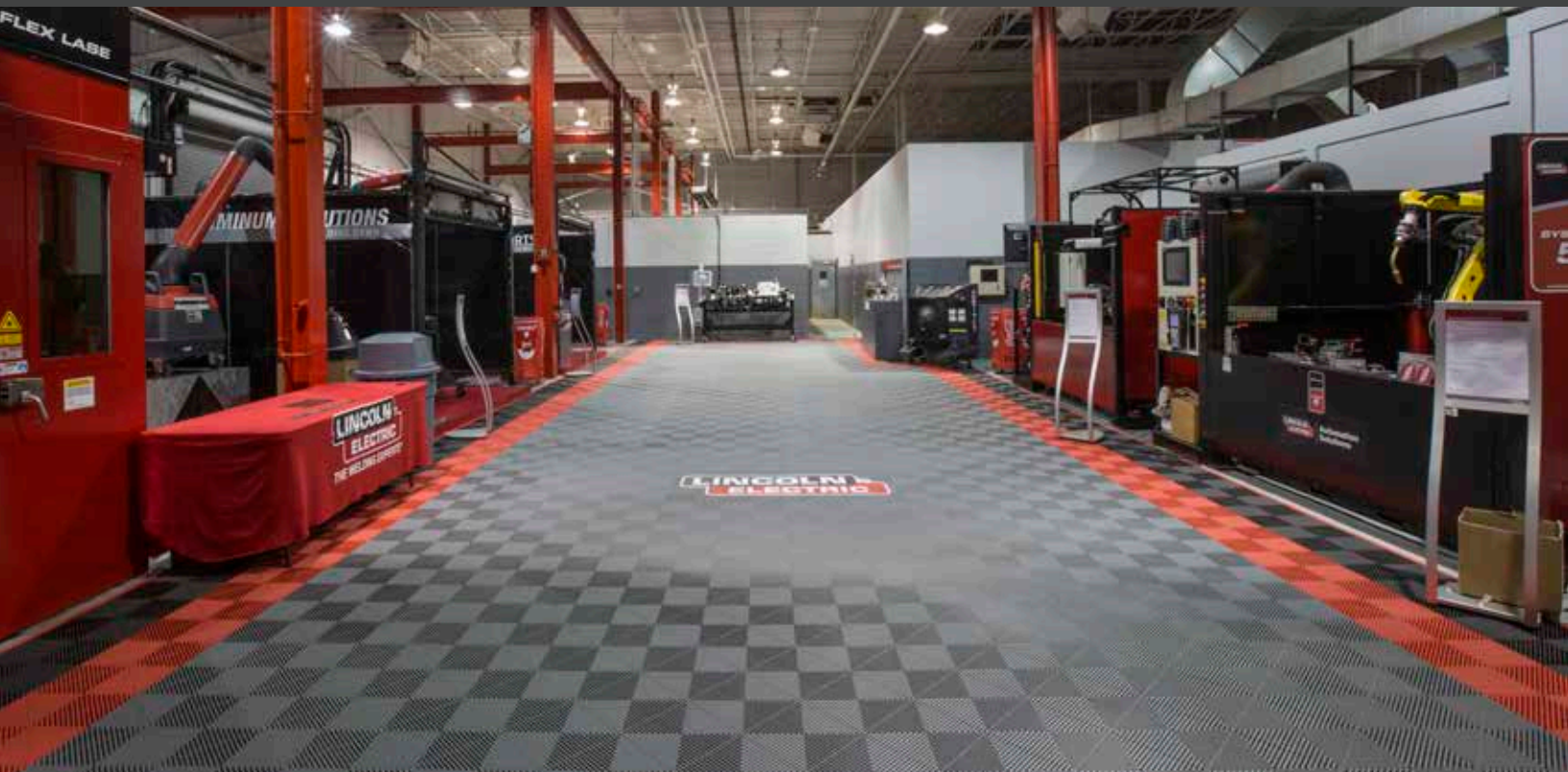
NOT JUST SURFACE BEAUTY

Customize your floor to fit the needs of your business and add your company logo right into the tiles.

“ We’re working daily – grinding, cutting, changing out fluids. We’ve been so impressed with how well the Swisstrax flooring has held up. Spills just drain out of our way. At the end of the day our backs aren’t killing us, which has been a big deal. We completely endorse Swisstrax and plan on using these tiles anywhere we possibly can. ”



Nic Ashby, Rockstar Performance Garage





Why choose Swisstrax as your Commercial Flooring?

Office, Warehouse, Workshop, Company Entrance & more...

Swisstrax flooring is the perfect way to enhance the look of your business or work space. Our commercial flooring tiles are easy to install, easy to maintain and designed to last. Customize your floor to reflect the look of your business and even add your company logo right into the tiles.





Event *Flooring*

stand out from the crowd at any event and always

EXHIBIT GREATNESS

A portable solution that is easy to assemble, disassemble and conveniently transport to tradeshow or exhibit booths.

“ Every event we do, and we do about 17 per year, Swisstrax is all we use for our flooring. It's easy to put together, easy to maintain, it's extremely durable and highly cost effective. We've been using Swisstrax for years and plan to continue using them for years to come. ”



Paul Brearey, Marketing Manager Ford Motor Company





Why choose Swisstrax as your Event Flooring?

Trade Show Booth, Dance Floor, Special Event, Party, & more...

For tradeshow, events and exhibit booths, our interlocking tiles are the premiere choice. A portable solution that is easy to assemble, disassemble and conveniently transport from location to location.





Residential *Flooring*

ideal alternative to concrete or epoxy

STEP UP YOUR REMODEL

Enhance the look of your residential space and cover up cracks, stains or boring concrete.

“ After researching every option to cover my concrete garage floor, it was obvious to me that Swisstrax was the way to go! Easier to install and maintain than epoxy and no other tile company came close to their quality! ”

Ken Smith, Palm Desert, CA

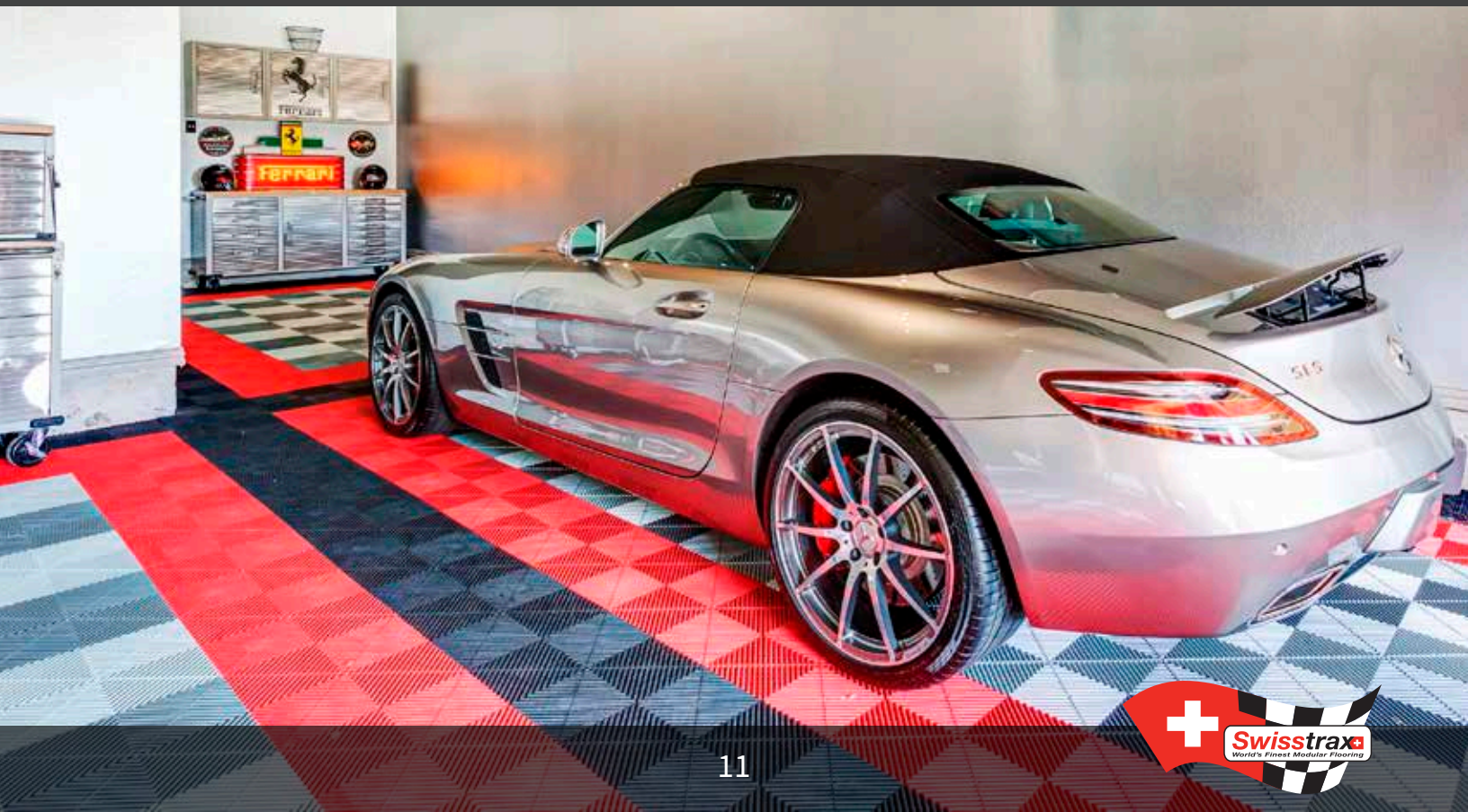




Why choose Swisstrax as your Residential Flooring?

Garage, Patio, Pool, Basement, Office, Gym, Storage Area, Toy Barn & more...

Swisstrax offers an ideal alternative to standard concrete and epoxy flooring. Cover up floor imperfections in your residential space such as cracks, stains, lifted epoxy or just boring concrete.





Ribtrax®

versatile and durable tile for any application

FORM MEETS FUNCTION

A revolutionary tile design that combines a striking, eye-catching design with unmatched functionality.



SUPERIOR STRENGTH

3/4" height profile features a compressive strength of 3,120 psi and 70,000 lbs of rollover weight.



NON-SLIP

A safe solution to moisture.



RAIN OR SHINE

UV Stabilizer mixed into the material as well as the color pigments, making them highly fade resistant.



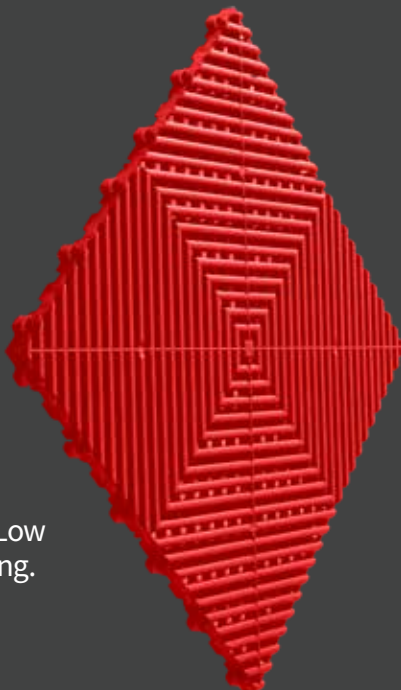
DO IT YOURSELF

Quick install in hours not days. Low maintenance, hassle free cleaning.



SILENT STEP

No click-clack.



CHEMICAL RESISTANT

Resistant to oil, gas, acid or solvents including Skydrol and Alkalis.



HEAT RESISTANT

Temperature Tolerances: -22 °F to + 248 °F.



CONSTRUCTION

Open profile, ribbed design with 1/4" built in, self-draining channeling system.



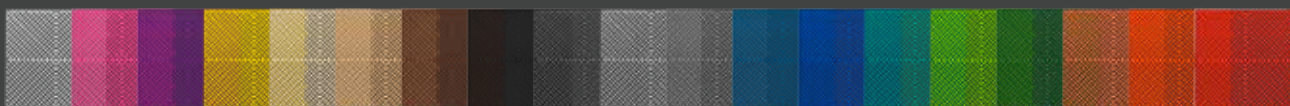
VARIETY

Choose from 19 different color options. Interlock with other 15.75" Swisstrax tiles.



100% RECYCLABLE

100% sustainable.



Arctic White, Carnival Pink, Cosmic Purple, Citrus Yellow, Ivory, Mocha Java, Chocolate Brown, Jet Black, Slate Grey, Pearl Silver, Pearl Grey, Island Blue, Royal Blue, Teal, Techno Green, Turf Green, Terra Cotta, Tropical Orange, Racing Red

Vinyltrax®

its never been easier to make your floor

SLEEK. BOLD. DURABLE.

Realistic and durable vinyl floors with legendary Swisstrax Performance.



Upgrade standard Vinyltrax® to a custom color or design to match any corporate identity or preferred appearance.

**minimum order quantity required*



SUPERIOR STRENGTH

3/4" height profile features a compressive strength of 1,250 psi and 25,000 lbs of rollover weight.



DO IT YOURSELF

Quick install in hours not days. Low maintenance, hassle free cleaning.



SILENT STEP

No click-clack.



CHEMICAL RESISTANT

Resistant to oil, gas, acid or solvents including Skydrol and Alkalis.



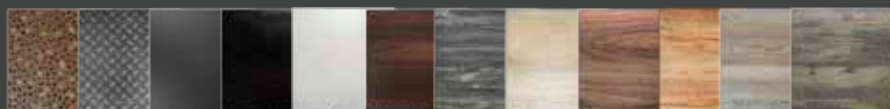
CONSTRUCTION

Patented base design with 1/4" built in support system that also maximizes airflow. Closed profile, "peel and stick" commercial grade vinyl inlay can easily be replaced.



VARIETY

Choose from more than 11 standard woodgrains, patterns and surface appearances. Interlock with other 15.75" Swisstrax tiles.



Stone, Diamond Plate, Carbon Fiber, Glossy White, Glossy Black, Dark Oak, Black Oak, Light Maple, Medium Maple, Natural Pine, Ash Pine, Reclaimed Pine



Diamondtrax®

diamonds are a floor's best friend

LEGENDARY TOUGHNESS

Solid industrial tile that features a classic diamond plate appearance. Easy to clean and built to last.



SUPERIOR STRENGTH

3/4" height profile features a compressive strength of 3,120 psi and 70,000 lbs of rollover weight.



DO IT YOURSELF

Quick install in hours not days. Low maintenance, hassle free cleaning.



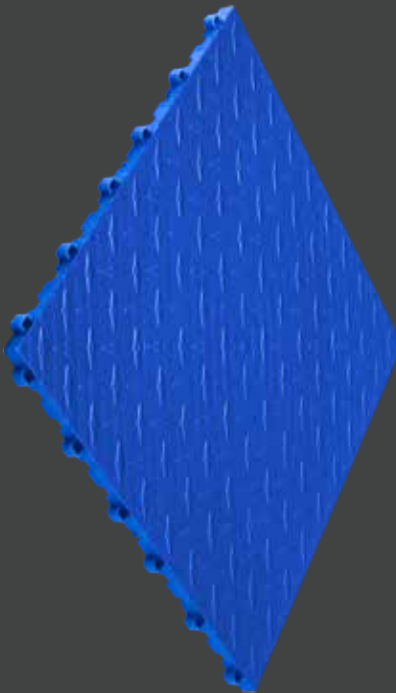
NON-SLIP

Diamond traction ensures safety.



RAIN OR SHINE

UV Stabilizer mixed into the material as well as the color pigments, making them highly fade resistant.



CHEMICAL RESISTANT

Resistant to oil, gas, acid or solvents including Skydrol and Alkalis.



HEAT RESISTANT

Temperature Tolerances: -22 °F to + 248 °F.



CONSTRUCTION

Closed profile, diamond design with 1/4" built in support system that also maximizes airflow underneath.



VARIETY

Choose from 9 different color options. Interlock with other 15.75" Swisstrax tiles.



100% RECYCLABLE

100% sustainable.



Arctic White, Citrus Yellow, Mocha Java, Chocolate Brown, Jet Black, Slate Grey, Pearl Silver, Royal Blue, Racing Red

Rubbertrax®

our recycled rubber makes it

EASY BEING GREEN

Rubbertrax is made entirely from 100% recycled and regionally sourced materials and features favorite tile styles with anti-fatigue benefits.



Rubbertrax® is made from recycled tires to create a durable, comfortable, safe flooring solution that is sustainable for our environment.



SUPERIOR STRENGTH

3/4" height profile features a compressive strength of 1,250 psi and 25,000 lbs of rollover weight.



DO IT YOURSELF

Quick install in hours not days. Low maintenance, hassle free cleaning.



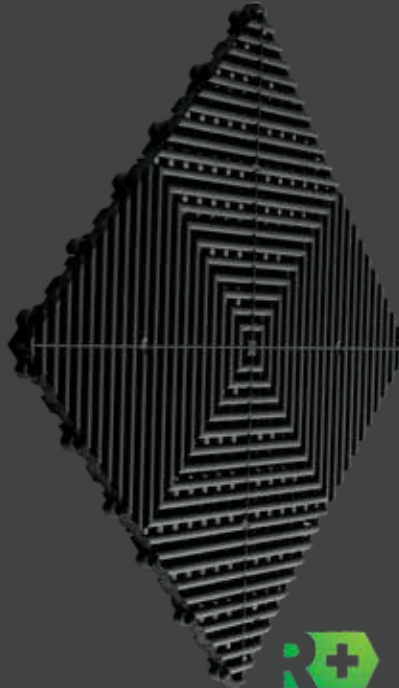
NON-SLIP

Comfortable and safe.



SILENT STEP

No click-clack.



CHEMICAL RESISTANT

Resistant to oil, gas, acid or solvents including Skydrol and Alkalies.



CONSTRUCTION

Flexible design with added comfort. Durable construction that built to last.



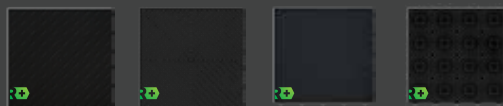
VARIETY

Choose from 4 different style options, interlock with other 15.75" Swisstrax tiles.



100% RECYCLABLE

100% sustainable.



Diamondtrax®, Ribtrax®, Floortrax®, Sportrax®

*Only available in Jet Black. Not intended for use under heavy objects.



Logotrax®

everything your brand needs to leave

A LASTING IMPRESSION

Custom works of craftsmanship helping your name stand out in the crowd. Provide the logo and we'll transform it into a bold flooring addition.



SUPERIOR STRENGTH

3/4" height profile features a compressive strength of 1,250 psi and 25,000 lbs of rollover weight.



NON-SLIP

A safe solution to moisture.



RAIN OR SHINE

UV Stabilizer mixed into the material as well as the color pigments, making them highly fade resistant.



DO IT YOURSELF

Finished logo assemblies directly into your Swisstrax flooring.



SILENT STEP

No click-clack.



CHEMICAL RESISTANT

Resistant to oil, gas, acid or solvents including Skydrol and Alkalies.



CONSTRUCTION

1/4" built in channeling system or support system depending on tile style. Contour cut Lexan logo routed directly into your tile creating a durable and high end branding solution.



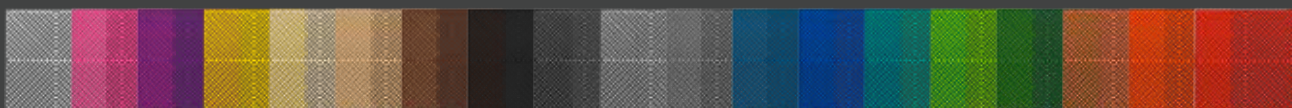
VARIETY

Choose from 19 different color options and 10 tile styles. Interlock with other 15.75" Swisstrax tiles.



100% RECYCLABLE

100% sustainable.



Arctic White, Carnival Pink, Cosmic Purple, Citrus Yellow, Ivory, Mocha Java, Chocolate Brown, Jet Black, Slate Grey, Pearl Silver, Pearl Grey, Island Blue, Royal Blue, Teal, Techno Green, Turf Green, Terra Cotta, Tropical Orange, Racing Red

Graphictrax®

promote your brand or personal style with

ENDLESS POSSIBILITIES

Thousands of images, patterns, colors, and styles or use any custom image.



SUPERIOR STRENGTH

3/4" height profile features a compressive strength of 1,250 psi and 25,000 lbs of rollover weight.



DO IT YOURSELF

Apply "peel and stick" logo directly to the interlocking bases. Finished logo assemblies directly into your flooring.



SILENT STEP

No click-clack.



CHEMICAL RESISTANT

Resistant to oil, gas, acid or solvents including Skydrol and Alkalis.



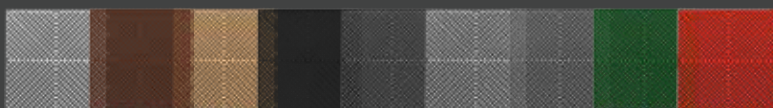
CONSTRUCTION

Patented base design with 1/4" built in support system that also maximizes airflow. Closed profile, "peel and stick" custom graphic inlay can easily be replaced or rebranded.



VARIETY

No size limitation, from one tile to one hundred. Interlock with other 15.75" Swisstrax tiles for a completely branded or full graphic look.



*Color variation only available for single Graphictrax®.



Turftrax®

create a fresh green landscape in any environment

GO GREEN. GO TURFTRAX.

Premium turf, an interlocking base and patented channeling for maximum airflow, sturdiness and comfort.



SUPERIOR STRENGTH

3/4" height profile features a compressive strength of 1,250 psi and 25,000 lbs of rollover weight.



NON-SLIP

Safe grass-like and cushioned appearance.



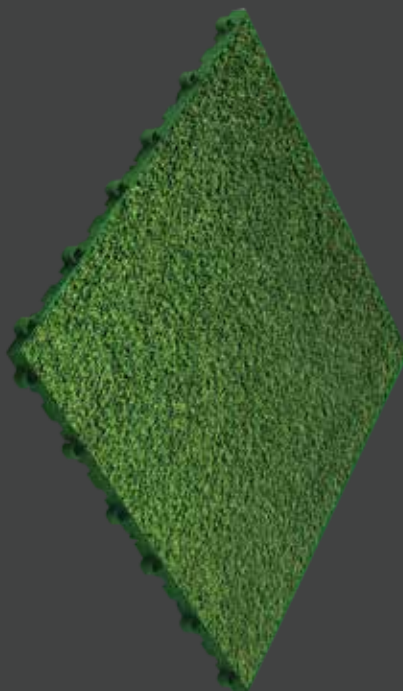
DO IT YOURSELF

Quick install in hours not days. Low maintenance, hassle free cleaning.



SILENT STEP

No click-clack.



CONSTRUCTION

Patented base design with 1/4" built in support system that also maximizes airflow. Closed profile, "peel and stick" commercial grade turf inlay can easily be replaced.



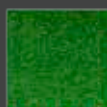
VARIETY

Interlock with other 15.75" Swisstrax tiles.



100% RECYCLABLE

100% sustainable.



Turf Green

Carpetrax®

transform any floor or space with

PLUSH & PREMIUM CARPET

It's never been faster or easier to install plush, premium carpet on any floor.



Carpetrax® require no messy adhesives for installation, like standard carpet does. Enjoy a reduced carbon footprint as you walk on this plush modular alternative.



SUPERIOR STRENGTH

3/4" height profile features a compressive strength of 1,250 psi and 25,000 lbs of rollover weight.



NON-SLIP

Safe cushioned appearance.



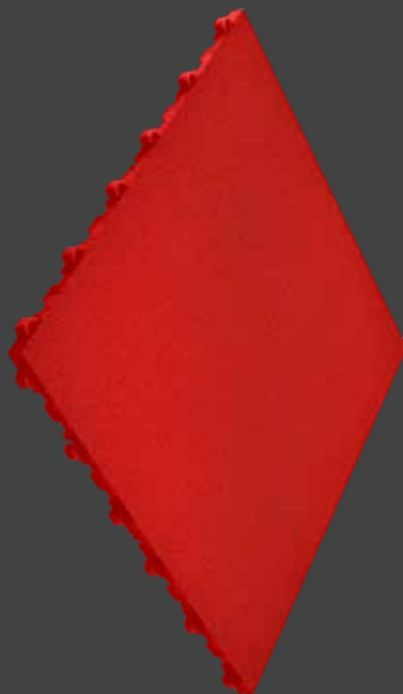
DO IT YOURSELF

Quick install in hours not days. Low maintenance, with hassle free cleaning.



SILENT STEP

No click-clack.



CONSTRUCTION

Patented base design with 1/4" built in support system that also maximizes airflow. Closed profile, "peel and stick" commercial grade carpet inlay can easily be replaced if damaged.



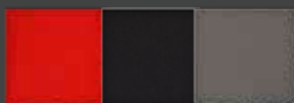
VARIETY

Choose from 3 different color options. Interlock with other 15.75" Swisstrax tiles.



100% RECYCLABLE

100% sustainable.



Red, Black, Grey





Lightrax®

there's no stopping a great idea

ILLUMINATED INNOVATION

Enhance what you want seen whether that be a logo, aisle way, catwalk, dance floor or new product showcase.



SUPERIOR STRENGTH

Compressive strength of 500 psi and 20,000 lbs of rollover weight.



DO IT YOURSELF

Quick install in hours not days. Low maintenance, hassle free cleaning.



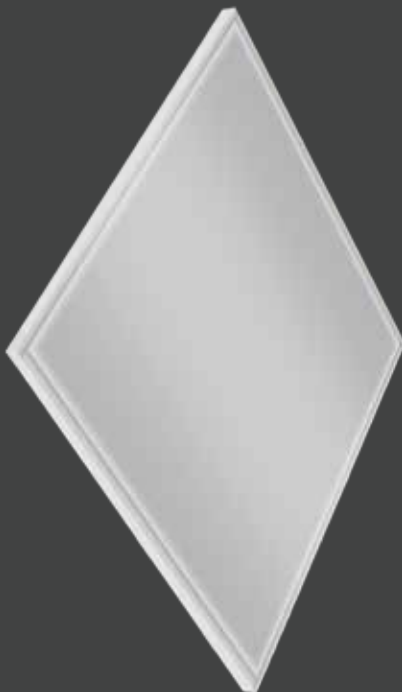
SILENT STEP

No click-clack.



CONSTRUCTION

Closed profile, illuminated LED panel.



VARIETY

Cover with any high resolution image or custom logo to illuminate your graphic.

Sizes available:

4" x 4" sample panel

15.75' x 15.75" (1x1 tile) panel

15.75" x 31.5" (1x2 tile) panel

31.5" x 31.5" (2x2 tile) panel

46.75" x 31.5" (2x3 tile) panel



White

*Available in multiple size variations.

Splashtrax®

the latest and greatest way to

MAKE A SPLASH

Add friendly entertainment to any environment that all ages will enjoy!



SUPERIOR STRENGTH

3/4" height profile features a compressive strength of 1,000 psi and 20,000 lbs of rollover weight.



NON-SLIP

Safe for all ages of play.



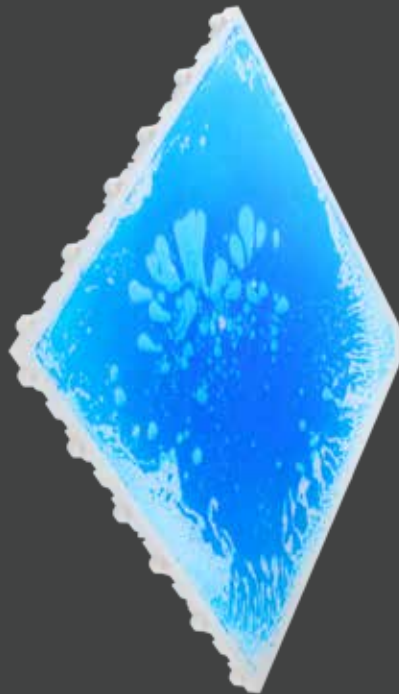
DO IT YOURSELF

Quick install in hours not days. Low maintenance, hassle free cleaning.



SILENT STEP

No click-clack.



CONSTRUCTION

Patented base design with 1/4" built in support system that also maximizes airflow. Closed profile, splash insert made up of shockproof sheets sealed with rigid polycarbonate.



VARIETY

Choose from 4 different color options. Interlock with other 15.75" Swisstrax tiles.



Blue, Orange, Purple, Red



Basetrax®

the freedom to floor with a revolutionary

SUPREME SUBFLOOR

The trusted and sturdy foundation for even the wildest flooring imagination.



Basetrax® undersides can be routed for custom electrical paths. Have the freedom to enjoy plugs and outlets anywhere in your floor.



SUPERIOR STRENGTH

Compressive strength of 1,250 psi and 25,000 lbs of rollover weight.



NON-SLIP

Subfloor with safety in mind.



DO IT YOURSELF

Quick install in hours not days. Low maintenance, hassle free cleaning.



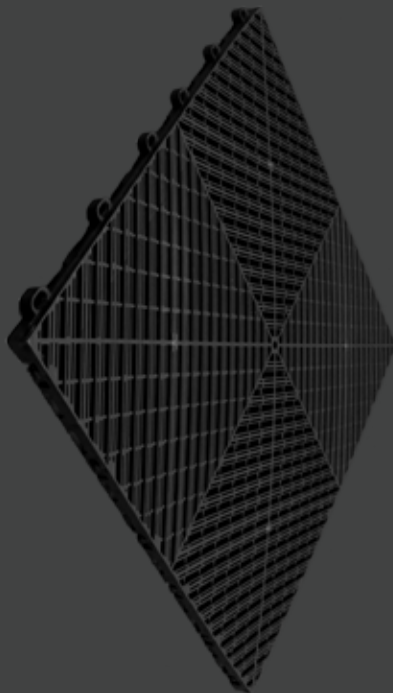
SILENT STEP

No click-clack.



CHEMICAL RESISTANT

Resistant to oil, gas, acid or solvents including Skydrol and Alkalies.



HEAT RESISTANT

Temperature Tolerances: -22 °F to + 248 °F.



CONSTRUCTION

Patented base design with 1/4" built in support system also maximizes airflow. Open profile design with reduced height to allow a variety of overlay flooring solutions.



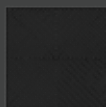
VARIETY

Interlock with other 15.75" Swisstrax tiles, cover with any flooring from commercial carpet to hardwoods or custom Swisstrax solutions.



100% RECYCLABLE

100% sustainable.



Jet Black

Cabletrax®

Eliminate unsightly wires and cables with the ultimate

COVERT ELECTRICAL PLAN

Keep cords organized, out of sight and safely concealed beneath your Swisstrax flooring solution.



SUPERIOR STRENGTH

Compressive strength of 1,250 psi and 25,000 lbs of rollover weight.



DO IT YOURSELF

Pre-routed for quick install in hours not days.



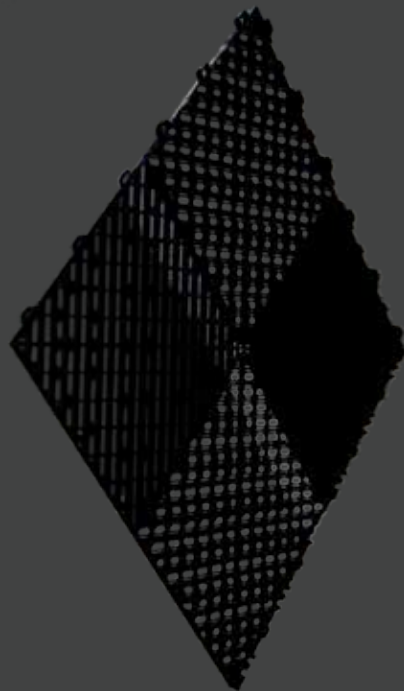
SILENT STEP

No click-clack.



CHEMICAL RESISTANT

Resistant to oil, gas, acid or solvents including Skydrol and Alkalies.



HEAT RESISTANT

Temperature Tolerances: -22 °F to + 248 °F.



CONSTRUCTION

Patented base design with 1/4" built in support system also maximizes airflow and incorporates electrical with ease.



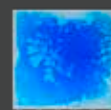
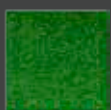
VARIETY

Available in 7 tile styles, over 15 colors and patterns. Interlock with other 15.75" Swisstrax tiles and create a custom path of only necessary cabling.



100% RECYCLABLE

100% sustainable.



Diamondtrax®, **Ribtrax®**, **Vinyltrax®**, **Turftrax®**, **Carpetrax®**, **Graphictrax®**, **Splashtrax®**

*Consult a flooring specialist for more details.



Floortrax®

being smooth never goes out of style

SMOOTH. SOLID. TOUGH.

Our smoothest solid surface tile with a lightly textured finish that's great for maneuvering.



SUPERIOR STRENGTH

Compressive strength of 3,120 psi and 70,000 lbs of rollover weight.



DO IT YOURSELF

Quick install in hours not days. Low maintenance, hassle free cleaning.



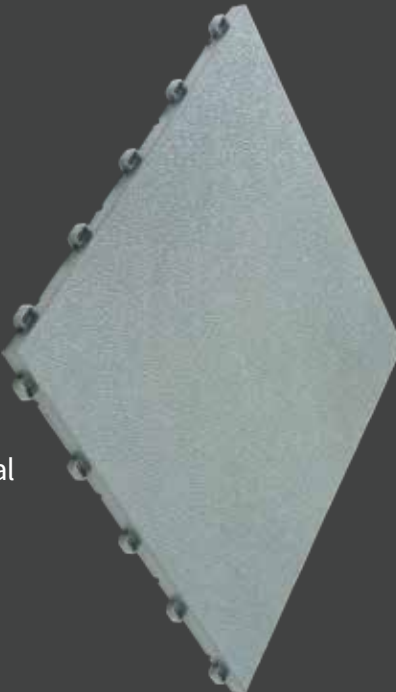
NON-SLIP

Textured traction ensures safety.



RAIN OR SHINE

UV Stabilizer mixed into the material as well as the color pigments, making them highly fade resistant.



CHEMICAL RESISTANT

Resistant to oil, gas, acid or solvents including Skydrol and Alkalis.



HEAT RESISTANT

Temperature Tolerances: -22 °F to + 248 °F.



CONSTRUCTION

Closed profile, durable substructure.



VARIETY

Choose from 7 different color options. Interlock with other 13" Swisstrax tiles.



100% RECYCLABLE

100% sustainable.



Arctic White, Mocha Java, Pearl Silver, Slate Grey, Jet Black, Island Blue, Racing Red

Sportrax®

open play surface, free from water and dirt making it the

KING OF THE COURT

Originally designed for roller hockey, Sportrax® is also perfect for Basketball, Tennis and Volleyball.



Sportrax® has been used worldwide for the Official Gretsky Hockey Training Academy. Only the best for a legend of the sport.



SUPERIOR STRENGTH

Compressive strength of 3,120 psi and 70,000 lbs of rollover weight.



DO IT YOURSELF

Quick install in hours not days. Low maintenance, hassle free cleaning.



NON-SLIP

Make the court a safe place to play.



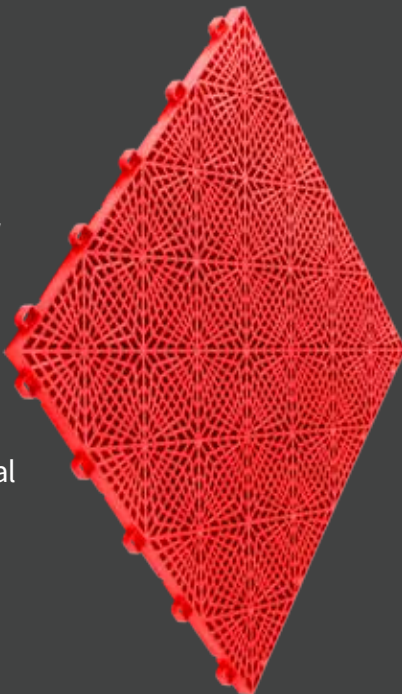
RAIN OR SHINE

UV Stabilizer mixed into the material as well as the color pigments, making them highly fade resistant.



CHEMICAL RESISTANT

Resistant to oil, gas, acid or solvents including Skydrol and Alkalies.



HEAT RESISTANT

Temperature Tolerances: -22 °F to + 248 °F.



CONSTRUCTION

Open profile eliminates dirt and water interference. Smooth, even surface is ideal for a wide variety of athletic action.



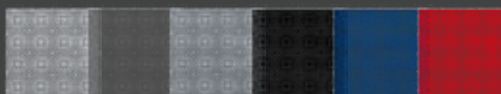
VARIETY

Choose from 6 different color options. Interlock with other 13" Swisstrax tiles.



100% RECYCLABLE

100% sustainable.



Arctic White, Slate Grey, Pearl Silver, Jet Black, Royal Blue, Racing Red



Swisstrax *Accessories*

make your installation perfect by adding the

FINISHING TOUCH

Swisstrax offers accessories that add a finishing touch to your application. Each accessory stands up to the Swisstrax standard of excellence.



LOOPED EDGE



PEGGED EDGE



CORNER



RECYCLED RUBBER UNDERLAY



WORK GLOVES



**OGIO® SWISSTRAX POLO
AVAILABLE IN WHITE AND
BLACK**



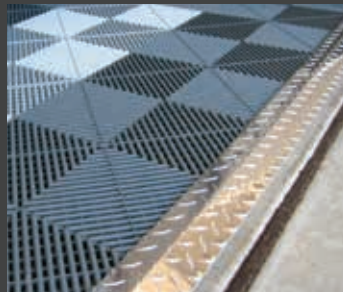
SWISSTRAX CLEANER



PARKING GUIDE



OIL DRIP PAD



TREADWARE EDGE



TREADWARE BASEBOARD



**PARK RIGHT TIRE
SAVERS®**





82-579 Fleming Way #A, Indio, CA 92201
(866) 748-7940
swisstrax.com

Copyright © 2017 Swisstrax, Inc.



Official licensed product